

Protective Cover

SSR50, SSR100, SSR300

SSR50 Available Soon

SSR100

SSR300



FEATURES

- Made of UL94V-0 Approved Clear Polycarbonate
- Engineered for easy installation and tight fit on Solid State relays

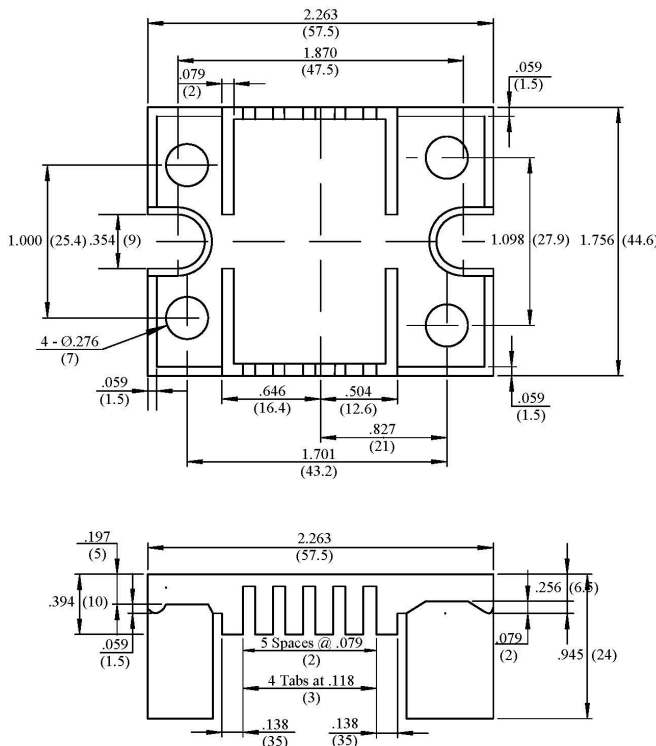
SSR50 - For Use with Picker Components Relays PCS52 and PCS53

SSR100 - For Use with Picker Components Relays PCS15, PCS33, PCS34 AC In and PCS34 DC In

SSR300 - For Use with Picker Components Relays PC21 and PCS24

DIMENSIONS

SSR100



SSR300

