

# 3/5 Amp Ultra Slim Inline Relay

**PC457**



## FEATURES

- Switching Current Range 0.1 mA up to 5 A
- 1 form A (SPST) Contact Form
- Ultra Slim, 3 mm Package
- SIL Terminal Pattern
- Terminals on 0.10" in Grid Pattern
- 2 kV Dielectric Between Coil and Contacts
- Sealed, Immersion Cleanable
- Lead Free & RoHS Compliant

## UL / CUL Ratings



Load Type	All Forms, All Contacts
General Use	3A or 5A at 250 VAC / 30 VDC
Resistive	3A or 5A at 250 VAC / 30 VDC
Minimum Load	0.1mA @ 0.1 VDC

## CHARACTERISTICS

Operate Time	6 ms max
Release Time	3 ms max
Insulation Resistance	1000 MΩ min (at 500 VDC, 50%RH)
Dielectric Strength	2000 Vrms, 1 min, between Coils and Contacts 1000 Vrms, 1 min, between Open Contacts
Shock Resistance	10 g. 11 ms, functional; 100 g. destructive
Vibration Resistance	DA 2.5 mm, 10 - 55 Hz
Power Consumption	120 mW
Operating Temperature	-40°C to 70°C
Storage Temperature	-40° to 130°C
Weight	3 grams

## CONTACT DATA

Material	AgCdO+Au (Silver Cadmium Oxide Gold Clad)	
Initial Contact Resistance	100 milliohms max @ 0.1A, 6 VDC	
Service Life	Mechanical	2 x 10 <sup>7</sup> Operations
	Electrical	1 x 10 <sup>5</sup> Operations

## ORDERING INFORMATION

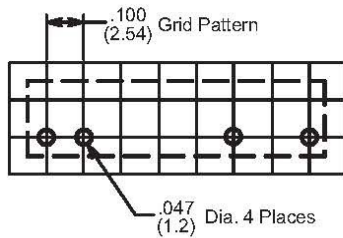
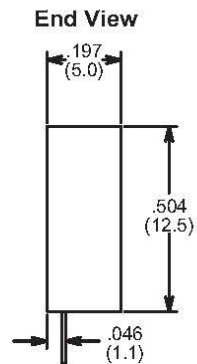
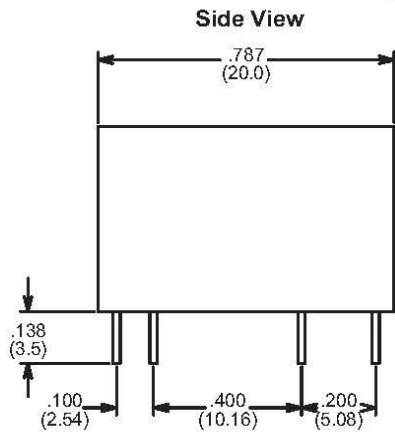
Example:	PC457	-1A	-12	S	-5	-X
Model:	<b>PC457</b>					
Contact Form:	<b>1A</b>					
Coil Voltage:	<b>5, 6, 9, 12, 18, 24</b>					
Enclosure:	<b>S: Sealed; C: Flux Free</b>					
Contact Rating:	<b>3: 3 AMP; 5: 5 AMP</b>					
RoHS Compliant:	<b>-X</b>					

Box Quantity: 2,000; Inner Box: 1,000

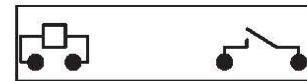
COIL DATA

Coil Voltage	Resistance Ohms ± 10%	Must Operate Voltage Max. (VDC)	Must Release Voltage Min. (VDC)	Continuous Voltage Max. (VDC)	Coil Power (mW)
5	208	3.5	0.25	5.5	120
6	300	4.2	0.3	6.6	
9	675	6.3	0.45	9.9	
12	1200	8.4	0.6	13.2	
18	2700	12.6	0.9	19.8	
24	3200	16.8	1.2	26.4	

Dimensions in Inches (millimeters)  
Drawings are 2X actual size



Hole Pattern



Wiring Diagram