

# 4 / 5 Pin Mini ISO Automotive Relay Socket

**SC792**



**For use with, PC792A,  
PC792C and PC792H**

## FEATURES

- Mini ISO Automotive Relay Socket
- Heat Stabilized Thermoplastic
- -40 to 140°C Operating Temperature
- For Use with Wire Harnessing
- Seven Versions
  - Socket Only
    - 1 No Mounting Bracket for Relay
    - 2 No Mounting Bracket for Relay or Flasher
    - 3 With Mounting Bracket for Relay
  - With 12" Wire Leads
    - 1-5PIN-4Wire No Mounting Bracket for Relay
    - 1-5PIN-5Wire No Mounting Bracket for Relay
    - 3-5PIN-4Wire With Mounting Bracket for Relay
    - 3-5PIN-5Wire With Mounting Bracket for Relay

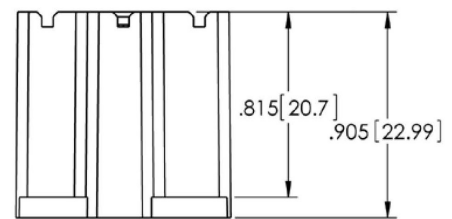
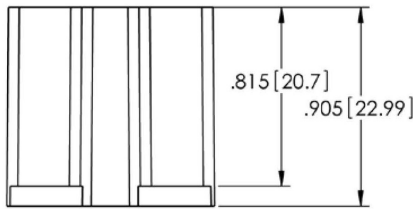
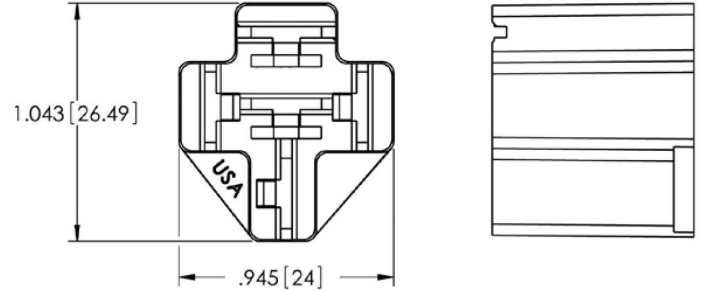
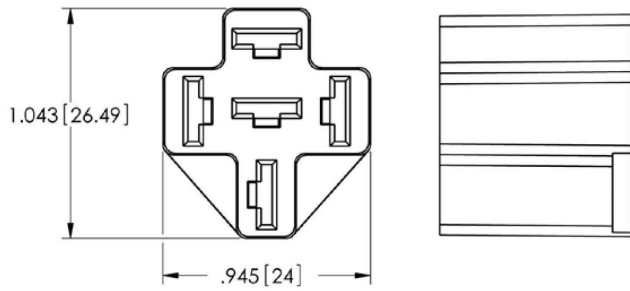
## ORDERING INFORMATION

Part Number	Description	Terminal Form
SC792-1	5 Pin Connector without Mounting Bracket for Wire Harness.	Crimp 1A,1C
SC792-2	5 Pin Connector for Relay Or Flasher without Mounting Bracket for Wire Harness.	Crimp 1A,1C
SC792-3	5 Pin Connector with Mounting Bracket for Wire Harness.	Crimp 1A,1C
SC792-1-5PIN-4Wire	5 Pin Connector with 4 Wire Harness, without Mounting Bracket, SPST, 12" Wire Leads, 14 awg at Load Contacts 30 and 87, 18 awg at Coil Contacts 85 and 86.	— 1A
SC792-1-5PIN-5Wire	5 Pin Connector with 5 Wire Harness without Mounting Bracket, SPDT, 12" Wire Leads, 14 awg at Load Contacts 30, 87 and 87a, 18 awg at Coil Contacts 85 and 86.	— 1A,1C
SC792-3-5PIN-4Wire	5 Pin, 4 Wire with Wall Mount Bracket, SPST, 12" Wire Leads, 14 awg at Load Contacts 30 and 87, 18 awg at Coil Contacts 85 and 86.	— 1A
SC792-3-5PIN-5Wire	5 Pin, 5 Wire with Wall Mount Bracket, SPDT, 12" Wire Leads, 14 awg at Load Contacts 30, 87 and 87a, 18 awg at Coil Contacts 85 and 86.	— 1A,1C

Order From	Part Number	AWG	Blade
TE Connectivity	42100	14-18	1/4"
TE Connectivity	42281	14-18	1/4"
TE Connectivity	42904	12-16	1/4"
TE Connectivity	60249	12-16	1/4"
TE Connectivity	60253	12-14	1/4"

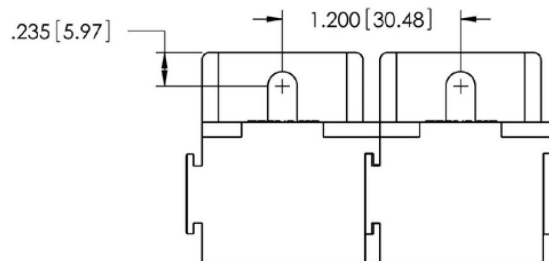
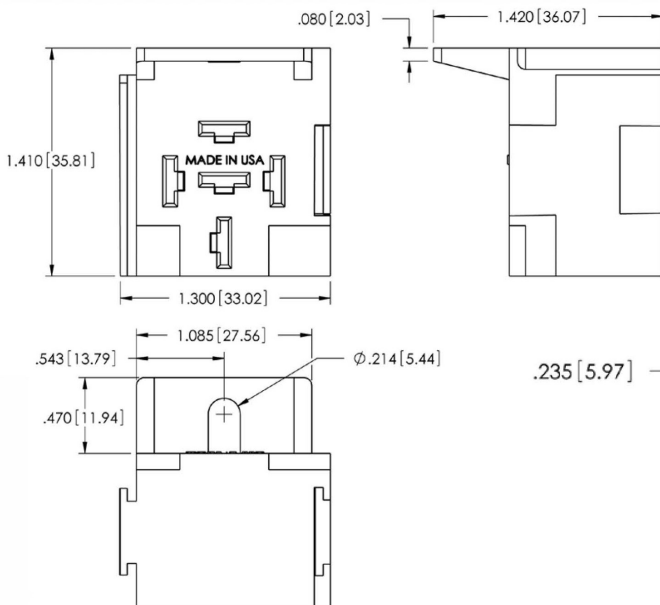
Picker Components references these terminals to be used with our Automotive\* Series Sockets. Current capability of the terminals depends on the gauge of wire used, the quality of the crimp, the addition of solder or a weld, operating conditions, temperature cycling, etc. Terminals to be purchased separately.

**DIMENSIONS (inches/mm)**



**SC792-1, SC792-1-5PIN-4Wire & SC792-1-5PIN-5WIRE**

**SC792-2**



**SC792-3, SC792-1-5PIN-4WIRE & SC792-1-5PIN-5WIRE**

**SC792-3 are Stackable**



3220 Commander Drive, Suite 102 Carrollton, TX 75006  
 Sales: (972) 713-6272 (888) 997-3933

Fax: (972)735-0964

www.PickerComponents.com  
 e-mail: sales@pickercomponents.com

Dimensions are listed for reference purposes only.

Specifications and Availability subject to change without notice.