

# 5 & 8 Pin Slim Line Relay Socket For PCB Power Relays

**SC375**



## FEATURES

- Slim Line Relay Socket
- 10 A, 300 V Rating
- Plastic or Metal Hold Down Springs
- Copper Alloy Tin Plated Contacts
- Break Resistant Thermoplastic Molding
- Two Versions
  - 5 Pin PCB with 3.5 mm Spacing
  - 8 Pin PCB with 5.0 mm Spacing
- RoHS Compliant

## ORDERING INFORMATION

Part Number	Description	Terminal
SC375-3.5	SDPT, 5 Pin Slim Line	PC Board
SC375-5.0	SDPT, 8 Pin Slim Line	PC Board

## For Use With:

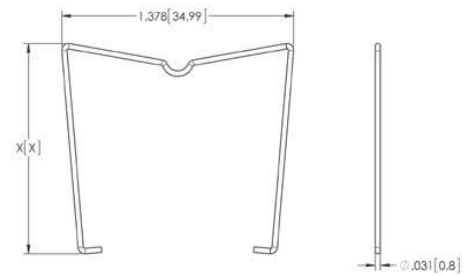
**PC375 and PC393**

## SOCKET COMPATIBILITY

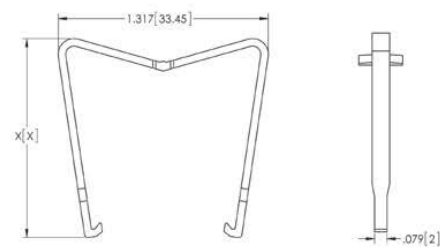
Part Number	Relay
SC375-3.5	PC375 Version 1
SC375-5.0	PC375 Version 2
SC375-5.0	PC375 Version 3
SC375-5.0	PC375 Version 4
SC375-5.0	PC393

## ACCESSORIES

Part Number	Description	Relay	Dimension X In (mm)
SCM16	Steel Hold Down Spring	PC375	.852 (18.85)
SCM25	Steel Hold Down Spring	PC393	1.247 (31.66)
SCP16	Plastic Hold Down Spring	PC375	.897 (22.79)
SCP25	Plastic Hold Down Spring	PC393	1.245 (31.63)

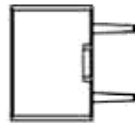
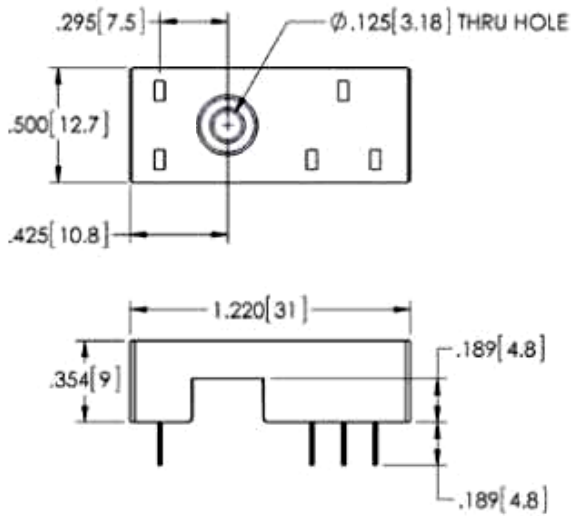


Stainless Steel

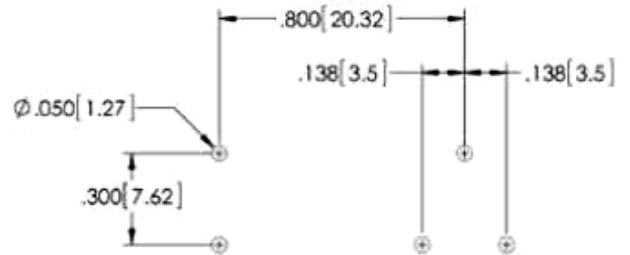


Plastic

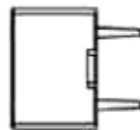
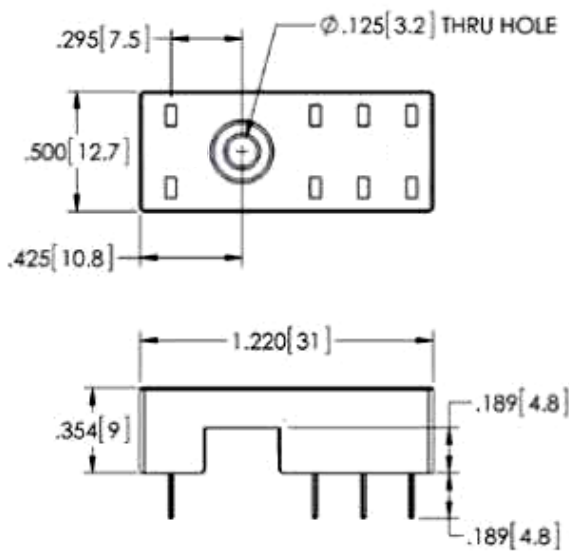
DIMENSIONS (inches/mm)



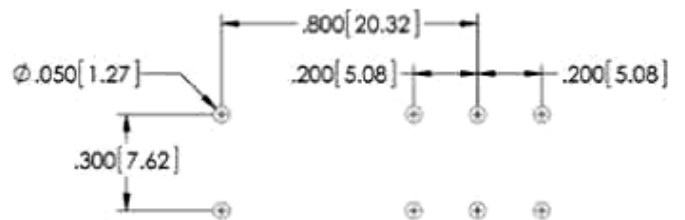
PC Board Mounting



SC375-3.5



PC Board Mounting



SC375-5.0