

14 Pin Socket For Din Rail or Panel Mount

SC118-4C

For Use With PC118-4C (4 Pole) Relay

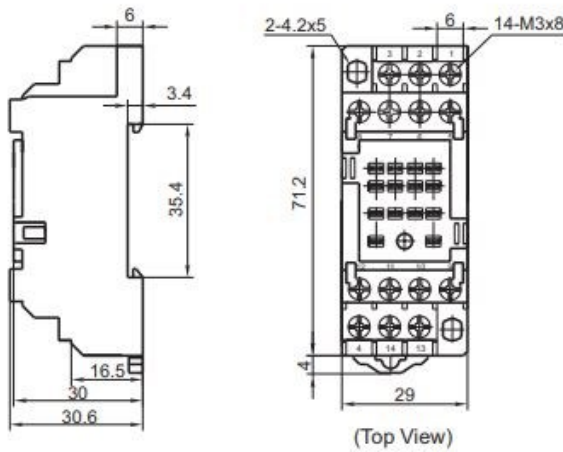


FEATURES

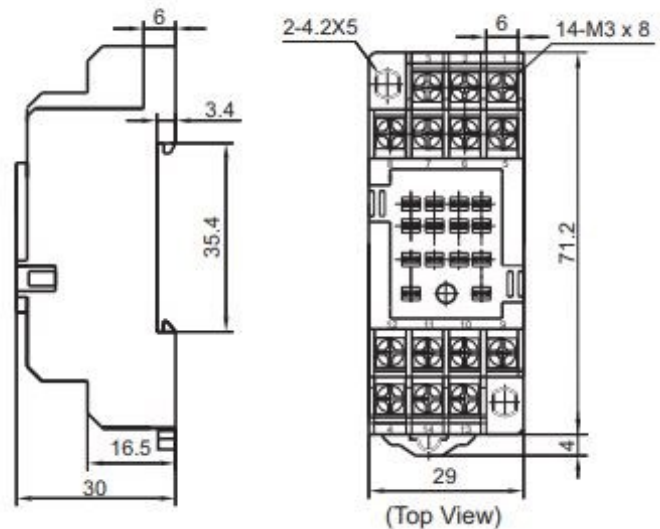
- Two Hold Down Clips Included
- Pressure Clamp Screws
- Two Versions
 - Open Terminals
 - Finger Safe Terminals
- RoHS Compliant

Dimensions in inches
(MM)

**Socket
With Finger Safe Terminals**



**Socket
Without Finger Safe Terminals**



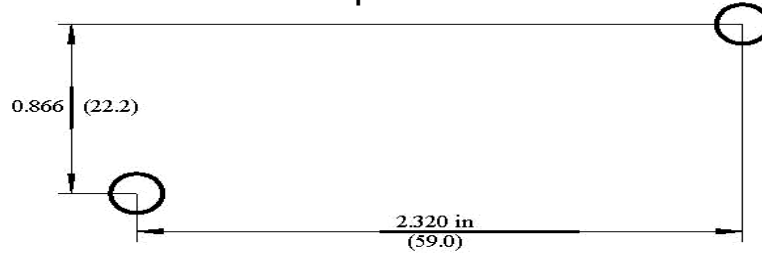
Notes

Two hold down clips included with each socket
 All Picker Components Sockets have pressure clamp screws
 Fits standard 35 mm Din Rail
 Tolerances +/- 0.010 unless otherwise noted

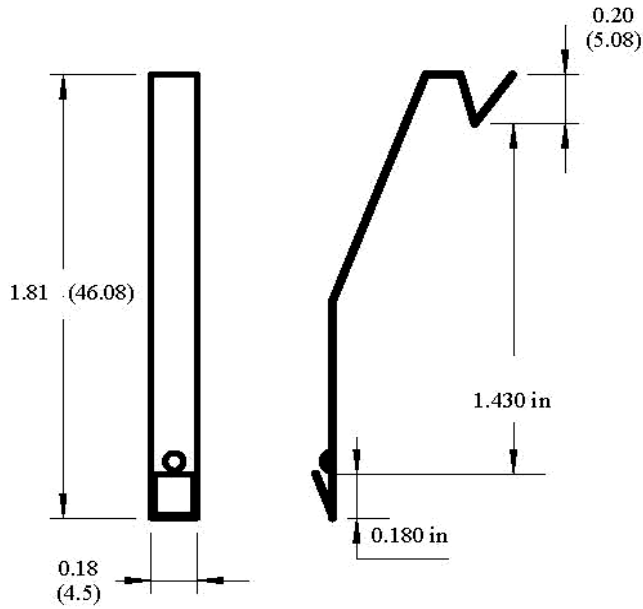
ORDERING INFORMATION

Part Number	Description	Terminals
SC118-4C-F1	14 Pin Socket	Open
SC118-4C-F2	14 Pin Socket	Finger Safe

Mounting Dimensions
Top View



Hold Down Clip



Terminal Layout
Top View

