

# 20 Amp Miniature PCB Power Relay

**PC393**



**CULUS E86876**

## FEATURES

- 20 Amp Contact Capacity
- 5 KV Dielectric Strength Between Coil and Contacts
- 10 mm Creepage Distance Between Coil and Contacts
- Sensitive Coil Version Available
- Meets UL 873 Spacing
- Sealed, Immersion Cleanable
- RoHS Compliant

## CONTACT DATA

Contact Form	Contact Form	
	1A2 ( SPST-NO )	1C2 ( SPDT )
Rated Load	5 A @ 250 VAC	8 A @ 250 VAC
	5 A @ 30 VDC	8 A @ 30 VDC
Max Switching Current	5 A	8 A
Max. Switching Power	600W	600W
Max. Switching Voltage	110 VDC / 380 VAC	110 VDC / 380 VAC

Material	AgSnO <sub>2</sub>	
Initial Contact Resistance	50 mΩ Max	
Service Life	Electrical	1 x 10 <sup>5</sup> Operations
	Mechanical	1 x 10 <sup>7</sup> Operations

## CHARACTERISTICS

Operate Time	15 ms Max.
Release Time	10 ms Max.
Insulation Resistance	1,000 MΩ Min at 500 VDC
Dielectric Strength	1,000 V 50Hz Between Contacts
	5000 V 50Hz Between Contact and Coil
Terminal Strength	10 N
Power Consumption	530 mW, 800 mW

## CHARACTERISTICS CONTINUED

Shock Resistance	100 m/s <sup>2</sup> 11ms
Vibration Resistance	10 Hz - 50 Hz—1.5 mm Amplitude
Solderability	235°C ± 2°C 3 s ± 0.5 s
Operating Temperature Range	- 40 to 70° C
Relative Humidity	85% ( 40° C, None Condensing )
Weight	20 grams

## ORDERING INFORMATION

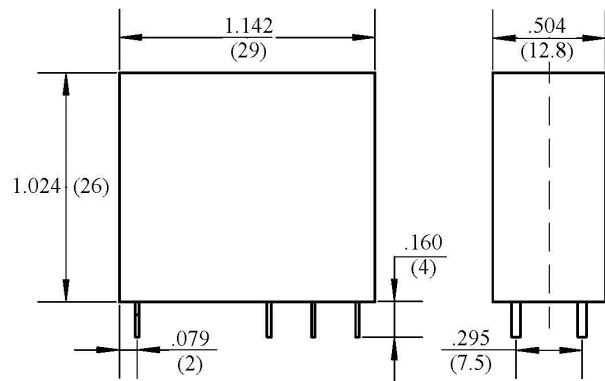
Example:	PC393	-1C2	-12	S	-H	-X
Model:	<b>PC393</b>					
Contact Form:	<b>1A2 or 1C2</b>					
Coil Voltage DC:	<b>3, 5, 6, 9, 12, 24, 48</b>					
Enclosure:	<b>S: Sealed, C: Dust Cover</b>					
Sensitivity:	<b>Nil: Standard 800 mW; H: Sensitive: 530 mW</b>					
RoHS Compliant:	<b>-X</b>					

Box Quantity: 600; Bundle Quantity: 75; Tube Quantity: 15

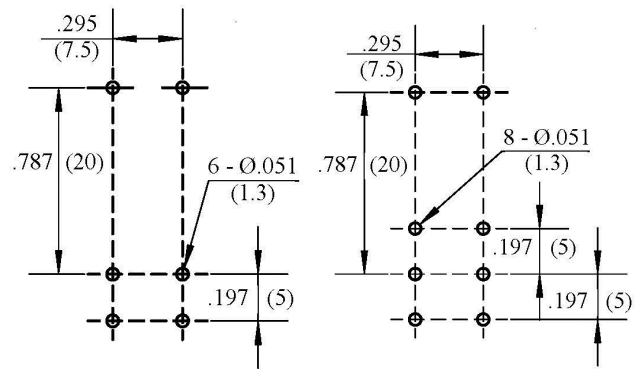
COIL DATA

Coil Voltage (VDC)		Coil Power		Must Operate Voltage Max. (VDC)	Must Release Voltage Min. (VDC)
		Resistance (Ohms ± 10%)			
Rated	Max	530 mW	800 mW		
3	3.9	17	26	2.25	0.3
5	6.5	47	71	3.75	0.5
6	7.8	68	103	4.50	0.6
9	11.7	153	231	6.75	0.9
12	15.6	275	420	9.00	1.2
24	31.2	1100	1681	18.00	2.4
48	62.4	4350	6570	36.00	4.8

DIMENSIONS (in/mm)



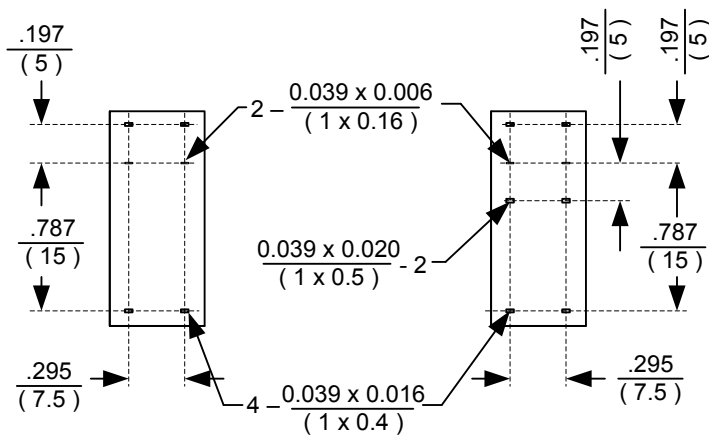
Relay (Side View & Front View)



1A2

1C2

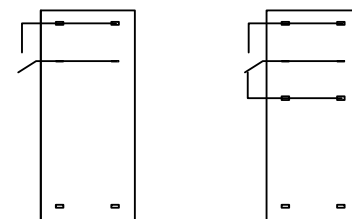
PCB Mounting (Top)



1A2

1C2

Terminal Layout (Bottom View)



1A2

1C2

Wiring Diagram (Bottom View)