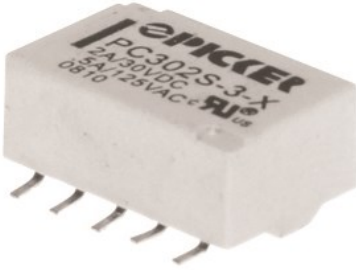


2 Amp Microminiature Signal Relay — Surface Mount

PC302S



FEATURES

- Microminiature Design
- 0.300" 10 Pin DIL Package
- Low 5mm Profile
- Meets FCC Part 68 Voltage Surge
- Bifurcated Contacts for High Sensitivity
- Sealed, Immersion Cleanable
- RoHS Compliant:
- Fully Automated Assembly

us E86876

Rated Load	2 Form C
Resistive	2 A / 30 VDC
Resistive	0.5 / 125 VDC
Max. Switching Power	60 W 62.5 VA
Max. Switching Voltage	220 VDC 250 VAC
Max. Switching Current	2 A
Min. Switching Load	0.01 mA 10 mV

CONTACT DATA

Material	Stationary	CuNi Base, AgPd+Au (Clad) Top
	Moveable	CuNi Base AgPd Top
Initial Contact Resistance		50 mΩ max
Service Life	Mechanical	1 X 10 ⁸ Operations
	Electrical	1 X 10 ⁵ Operations 0.5 A 125 VAC 2 X 10 ⁵ 1A 30VDC

CHARACTERISTIC

Operate Time	2.0 ms.
Release Time	Single Side Stable - 1.0 ms, Latching 2.0 ms
Insulation Resistance	1,000 MΩ min, at 500 VDC
Dielectric Strength	1,000 VAC, 1 min, Between Open Contacts
	1,000 VAC, 1 min, Between Coil and Contacts
	1,000 VAC, 1 min, Between Contact Poles
Surge Withstand Voltage	1,500 V, Between Open Contacts
	1,500 V, Between Coil and Contacts
FCC Part.68	2,500 V, Between Contacts Poles
Power Consumption	100 mW, 140 mW, 150 mW, 200 mW, 300 mW

CHARACTERISTIC Continued

Shock Resistance	Functional	500 m/s ² 11 ms
	Survival	1,000 m/s ² 11 ms
Vibration Resistance	Functional	10 Hz - 55 Hz Double Amplitude 3 mm
	Survival	10 Hz - 55 Hz Double Amplitude 5 mm
Terminal Strength	5N	
Solderability	255 °C 3 s ± 0.5 s	
Temperature Range	-40°C ~ 85°C (-40° F ~ 185° F)	
Weight	1.5 Grams	

COIL DATA

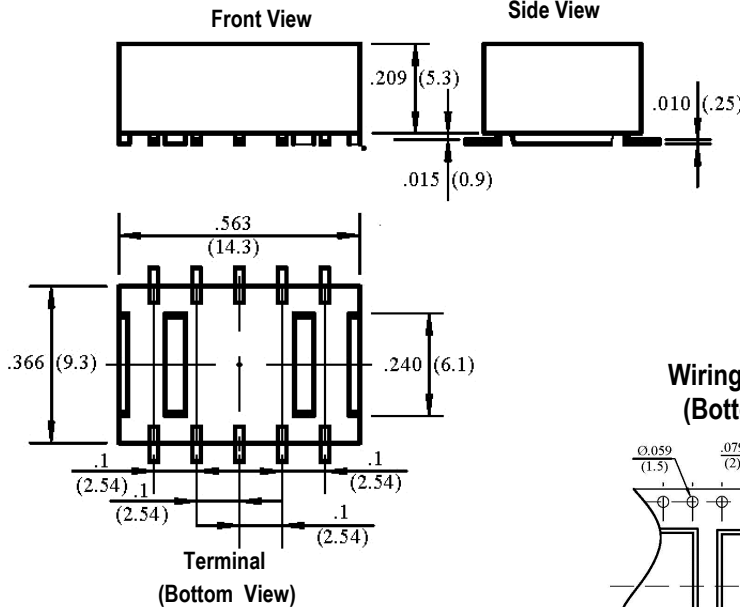
Type	Coil Voltage (VDC)		Coil Resistance (Ohms ± 10 %)	Must Operate Voltage Max. (VDC)	Must Release Voltage Min. (VDC)	Coil Power (W)
	Rated	Max.				
Single Sided Stable (140 mW)	3	7.5	64.3	2.25	0.3	0.14
	4.5	11.25	144.6	3.38	0.45	0.14
	5	12.5	178	3.75	0.5	0.14
	6	15.0	257	4.50	0.6	0.14
	9	22.5	579	6.75	0.9	0.14
	12	30.0	1028	9.00	1.2	0.14
	24	48.0	2880	18.0	2.4	0.20

ORDERING INFORMATION

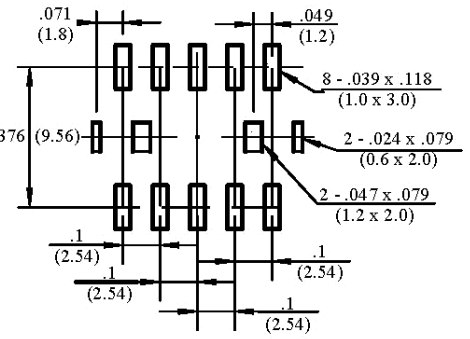
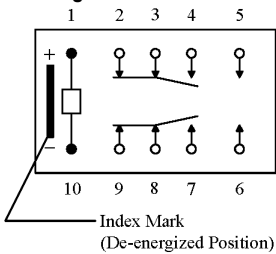
Example:	PC302S	-12	-L1	-X
Model:	PC302S			
Coil Voltage:	3, 4.5, 5, 6, 9, 12, 24			
Type of Operation:	Nil: Single Side Stable;			
RoHS Compliant:	-X			
Packaging:	Nil: Tubes of 25; TR: Tape and Reels, Reels of 500			

DIMENSIONS in Inches (mm)

Relay

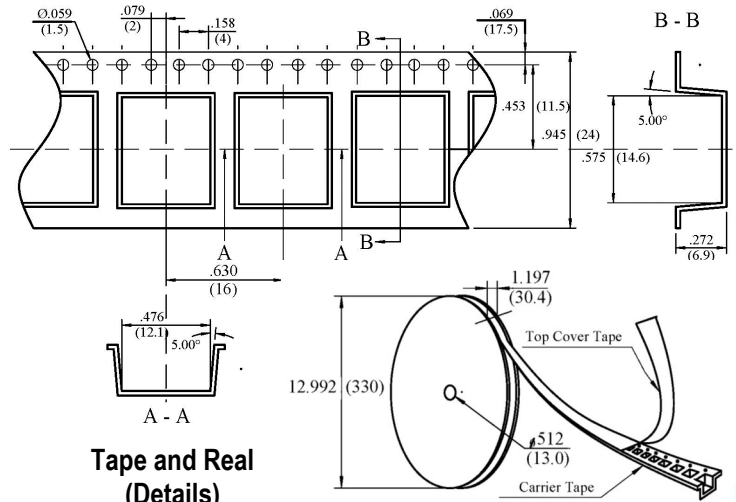


Single Side Stable



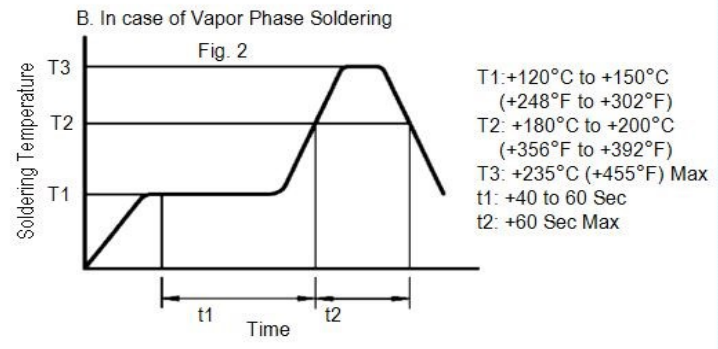
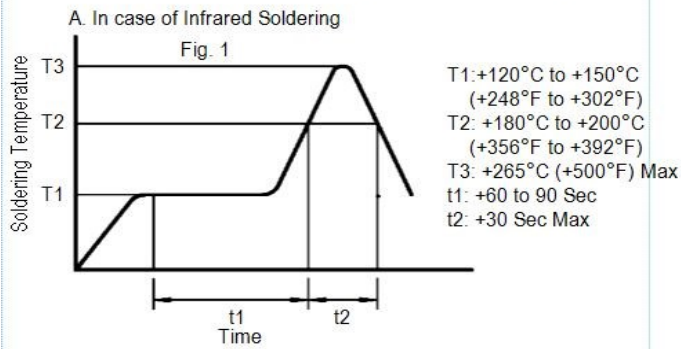
PCB Mounting (Top View)

Wiring Diagrams (Bottom View)



SOLDERING AND MOUNTING RECOMMENDATIONS

1) Conditions for Terminal Soldering by reflow soldering method.



2) The use of Stand-Off A & B in Base Area

The Stand-Offs shown in the Fig. 3 are designated to Anchor Relays temporarily to PC Board with glue before Terminal Soldering

